

## CASE STUDY

# Building Responsive COVID-19 Data Dashboards

Fairfield University, a Midsize Private Jesuit School in Fairfield, CT

- About:** Fairfield University is a private, religiously affiliated college with 5,500 students, a 90% average retention rate, and an 84% six-year graduation rate.
- Challenge:** Like most colleges, Fairfield was forced to make rapid, significant changes to every facet of its operations when COVID-19 struck. Seeking to provide a safe on-campus education experience for students in the Fall 2020 semester, administrators created a task force of staff and health professionals. The task force required accessible, up-to-date data that could help them respond to the evolving situation.
- Solution:** Fairfield’s Institutional Research department used Rapid Insight’s self-service analytics technology to organize reams of live data from several sources (both internal and external), then output the data to Excel for distribution to the COVID-19 task force and for public consumption. Using the dashboard, the task force could make data-driven decisions to contain infections, predict positivity rates, estimate the number of tests required, and prepare isolation beds.
- Impact:** Fairfield’s Rapid Insight dashboard allowed the task force to make timely, informed decisions and provide students with a safe on-campus experience. As the challenges presented by the pandemic continue to evolve, Fairfield’s response is adapting as well, shifting from contact tracing to testing availability to vaccination rates. With Rapid Insight’s intuitive, repeatable data workflows, Fairfield’s IR team easily expands the dashboard to answer new questions.

## Impact Highlights

# 20

Data points per student included in the dashboard

# 30

Task force members receive daily status updates

# 40

Available data visualizations and tables

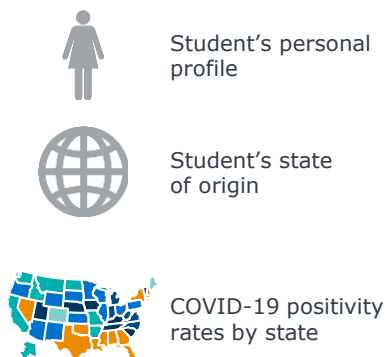
“ We built a very strong reporting infrastructure in a matter of days.”

—Daniel Grazynski,  
Assistant Director of IR

## Initial Dashboard Predicted Positivity Rate to Enable a Safe Reopening

COVID-19 Task Force Prepared Tests and Facilities to Prevent Transmission

### Rapid Insight Dashboard Data Inputs



**Potential Positivity Prediction**

### Fairfield Predicted the Need For:

-  Test quantity
-  Isolation beds
-  Staffing for testing centers

## Adapting the Dashboard as Needs Evolve

As the COVID-19 pandemic evolves, Fairfield’s dashboard incorporates new data and answers emerging questions. Rapid Insight makes it easy to add new data to the existing workflow, allowing Fairfield’s task force to receive relevant daily updates and address new challenges as needs change.

	Key Question	Data Added to Dashboard	Outcomes for Fairfield
2020	COVID pandemic begins Can we reopen safely?	<ul style="list-style-type: none"> <li>State-level infection rates</li> <li>State of student origin</li> <li>Student demographic data</li> </ul>	<ul style="list-style-type: none"> <li>✓ Understood potential positivity rate</li> <li>✓ Prepared facilities for student safety</li> </ul>
	Fall semester How do we keep students safe?	<ul style="list-style-type: none"> <li>Infection rates by dorm</li> <li>Daily and weekly infection trends</li> </ul>	<ul style="list-style-type: none"> <li>✓ Stocked testing facilities to the appropriate levels</li> <li>✓ Isolated infected students</li> </ul>
	Uptick in COVID-19 cases How do we minimize spread on campus?	<ul style="list-style-type: none"> <li>Employee and vendor data</li> <li>Predicted infection recovery dates</li> </ul>	<ul style="list-style-type: none"> <li>✓ Shifted to delivery dining</li> <li>✓ Contracted with hotels for isolation beds</li> </ul>
2021	Vaccine distributed widely How do we get the vaccine to students?	<ul style="list-style-type: none"> <li>Overall vaccination numbers</li> <li>Vaccination rates by dorm</li> </ul>	<ul style="list-style-type: none"> <li>✓ Hosted on-campus vaccination clinics</li> <li>✓ Encouraged students to get vaccinated</li> </ul>
	Booster available to general population How can we ensure the booster is available?	<ul style="list-style-type: none"> <li>Overall booster rates</li> <li>Booster rates by dorm</li> </ul>	<ul style="list-style-type: none"> <li>✓ Measured impact of booster on transmission and institutional operations</li> <li>✓ Reviewed and decreased potential clusters of unvaccinated or unboosted campus members</li> </ul>
2022			



In addition to the information above, the most recent iteration of Fairfield’s dashboard tracks daily and weekly cases, trends, and case counts by variables such as dorm of residence and athlete status. Fairfield’s dashboard will continue to change and serve the task force’s needs.

### Rapid Insight’s Analyst Support Team Played a Critical Role

Fairfield’s Institutional Research department worked with Rapid Insight’s team of support analysts to implement the dashboard and create the automated data workflows. As the pandemic evolves and the report changes along with it, Fairfield IR always has a team of experts to consult on the workflow before implementation.

“The Rapid Insight Support Team are the greatest superheroes of our time....They are eager to listen and genuinely interested in our work.”

-Daniel Grazynski, Assistant Director of Institutional Research, Fairfield University



Rapid Insight is now part of Edify, EAB’s data and analytics solution designed for higher ed. Learn how you can leverage your institution’s data for success at [eab.com/edify](https://eab.com/edify).