



# Scoring Your Incoming Students and Building the Second Model

Rapid Insight Retention Modeling Cohort: Session 2

*September 26, 2023*



**Give the Chat a Try!**

**What are you excited about  
for Fall?**

# Meet Your Presenters



**James Cousins**

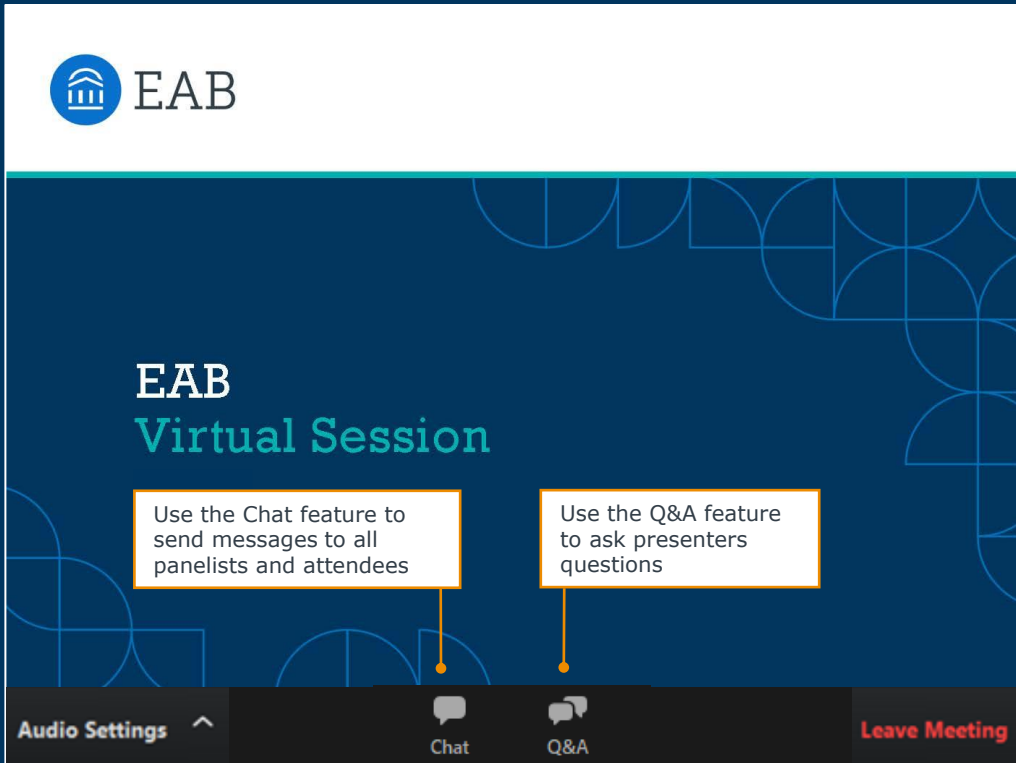
*Senior Strategic Leader,  
Data and Analytics*



**Lily Brennan**

*Strategic Leader,  
Data and Analytics*

# Submit a Question or Comment



The screenshot displays the EAB Virtual Session interface. At the top left is the EAB logo, which consists of a blue circle containing a white building icon, followed by the text "EAB". The main background is dark blue with a pattern of light blue geometric shapes. The text "EAB Virtual Session" is prominently displayed in the center. Below this, two callout boxes with yellow borders provide instructions: the left one says "Use the Chat feature to send messages to all panelists and attendees" and the right one says "Use the Q&A feature to ask presenters questions". At the bottom, a dark grey navigation bar contains four items: "Audio Settings" with an upward arrow, "Chat" with a speech bubble icon, "Q&A" with a speech bubble icon, and "Leave Meeting" in red text.

**EAB**

**EAB**  
**Virtual Session**

Use the Chat feature to send messages to all panelists and attendees

Use the Q&A feature to ask presenters questions

Audio Settings ^

Chat

Q&A

Leave Meeting

# Turn on Captions

The image shows a Zoom meeting interface with a dark blue background. At the top left, there is a white header with the EAB logo (a blue circle containing a white building icon) and the text "EAB". Below the header, the main content area has a dark blue background with a pattern of light blue geometric shapes. The text "EAB Virtual S" is visible in white and light blue. A white callout box with an orange border points to a menu that is open over the "CC" icon. The callout box contains the text "Enable an automated Live Transcript – Show Subtitle or View Full Transcript". The menu has three options: "Show Subtitle" (highlighted in blue), "View Full Transcript", and "Subtitle Settings...". At the bottom of the screen, there is a dark grey bar with three buttons: "Audio Settings" with an upward arrow, "Live Transcript" with a "CC" icon above it, and "Leave Meeting" in red text.

EAB

EAB  
Virtual S

Enable an automated Live Transcript –  
Show Subtitle or View Full Transcript

Show Subtitle  
View Full Transcript  
Subtitle Settings...

Audio Settings ^

CC  
Live Transcript

Leave Meeting

## Enter Your Responses in the Chat

**What are the most compelling student success interventions you've either heard of or done at your institution?**

# Poll Question

**How comfortable do you feel with translating a predictive model into student success scores?**

- a) Very comfortable
- b) Comfortable
- c) Somewhat uncomfortable
- d) Uncomfortable

- 1 **Welcome!**
- 2 Modeling Process Overview
- 3 Activity: Scoring
- 4 Activity: Model Building
- 5 Closing & Next Steps



# Welcome to Session 2 of the Cohort Series

Thank You for Your Commitment and Participation!



## **Assembling Data and Building the First Model**

*July 12, 1:00-2:30 PM ET*

Prepare and build your model using the data collected in your pre-work.



## **Scoring Your Incoming Students and Building the Second Model**

*September 26, 1:00-2:00 PM ET*

Build a second model and discuss ways to use scores. Bring student success colleagues for the first half of this session.



## **Scoring Your Returning Students and Looking Forward**

*January 10, 1:00-2:00 PM ET*

Refine your model and explore additional student success outcomes to predict.

Interactive and Actionable Working Sessions

# Today's Learning Objectives



By the End of Our Session...

**1** Practical Knowledge of scoring with a Predictive Model

Awareness of how you can operationalize predictive scores **2**

**3** Experience building models for multiple phases of student success

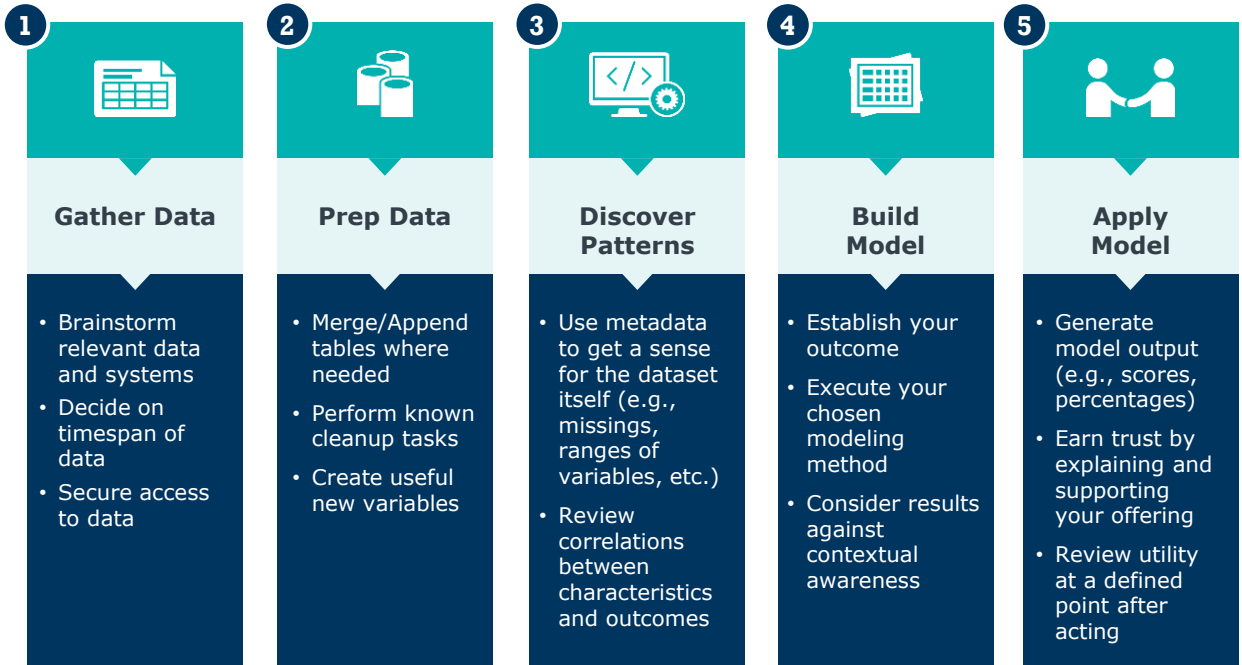
## Anywhere from “Comfortable” to “Very Comfortable”

- Our goal by the end of today's is to have you leave “comfortable” or “very comfortable” in these three areas.
- There is always more to learn, but you will know enough to become a part of meaningful progress at your institution!

- 1 Welcome!
- 2 **Modeling Process Overview**
- 3 Activity: Scoring
- 4 Activity: Model Building
- 5 Closing & Next Steps

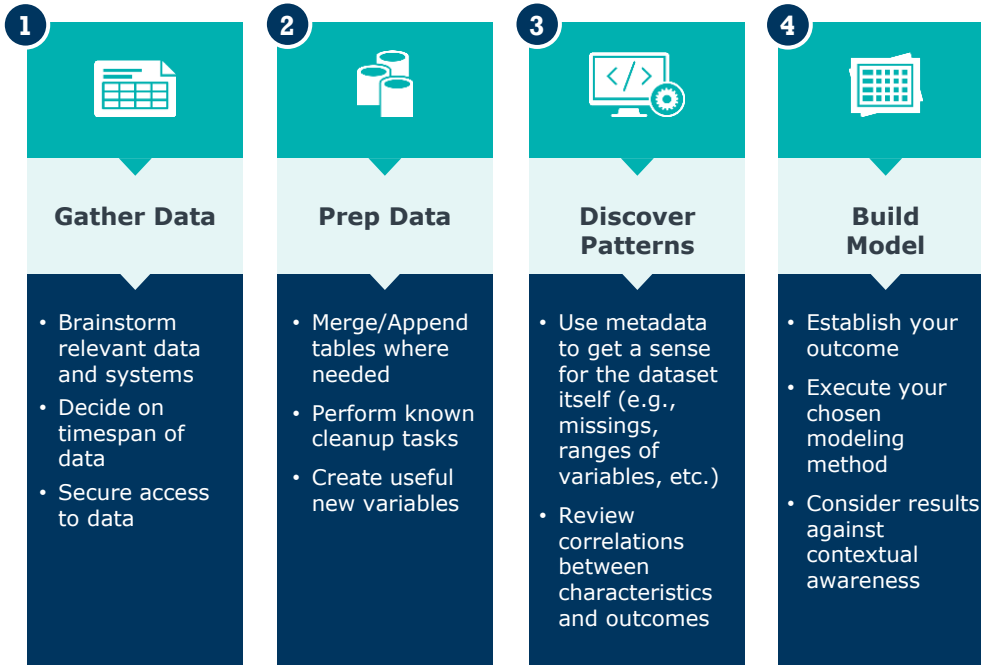
# Modeling Process Overview

## Steps to Build, Use, and Evaluate Your Model

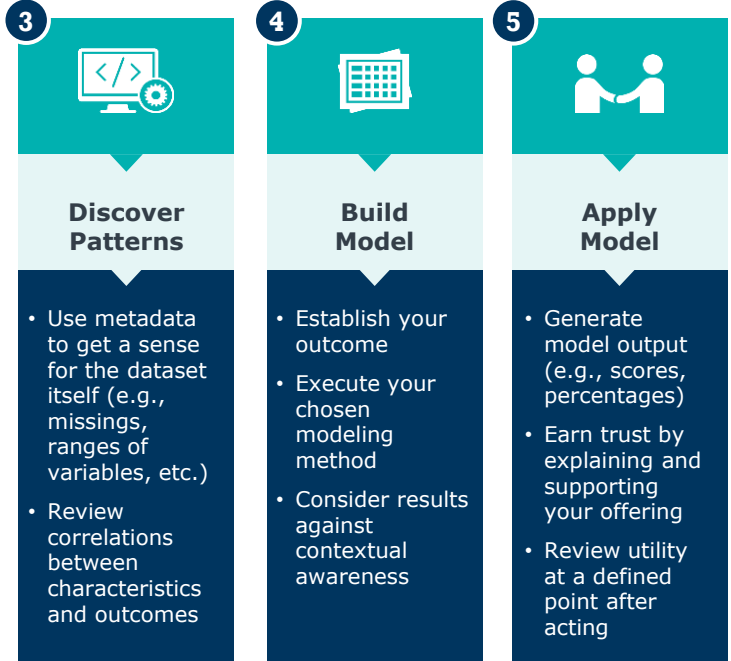


# You've Already Done Steps 1-4

...Between Your Pre-Work and Session 1



# We'll Do Steps 3-5 Today



# We'll Tackle Step 5 in Our Next Session



5



## Apply Model

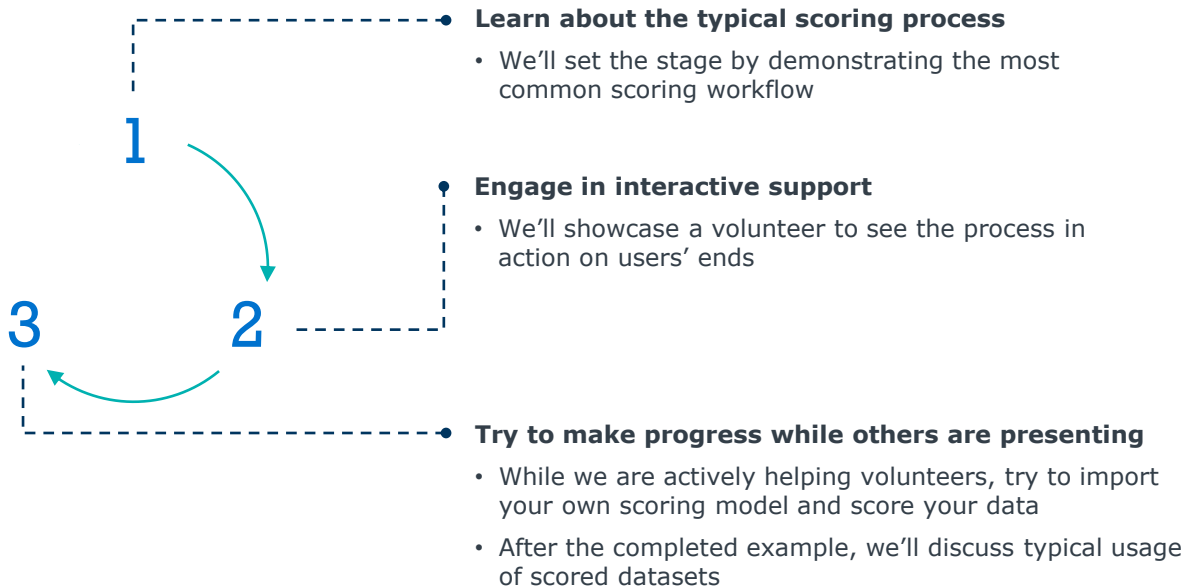
- Generate model output (e.g., scores, percentages)
- Earn trust by explaining and supporting your offering
- Review utility at a defined point after acting

- 1 Welcome!
- 2 Modeling Process Overview
- 3 **Activity: Scoring**
- 4 Activity: Model Building
- 5 Closing & Next Steps



# Scoring Your Current Students (Next ~10 Minutes)

## Activity



# Share Your Ideas!

## Consider...

- How can you imagine using these scores at your institution?
- How have you discussed using analytics for student success historically?
- Did any examples from our discussion stand out to you?

*Raise your hand or enter your  
response in the Chat*



# Interlude

---

If you happen to be a student success colleague but not a Rapid Insight user, you're welcome to stay, but free to leave!

- 1 Welcome!
- 2 Modeling Process Overview
- 3 Activity: Scoring
- 4 Activity: Model Building**
- 5 Closing & Next Steps

# Our Focus Areas: Discovery *and* Model-Building

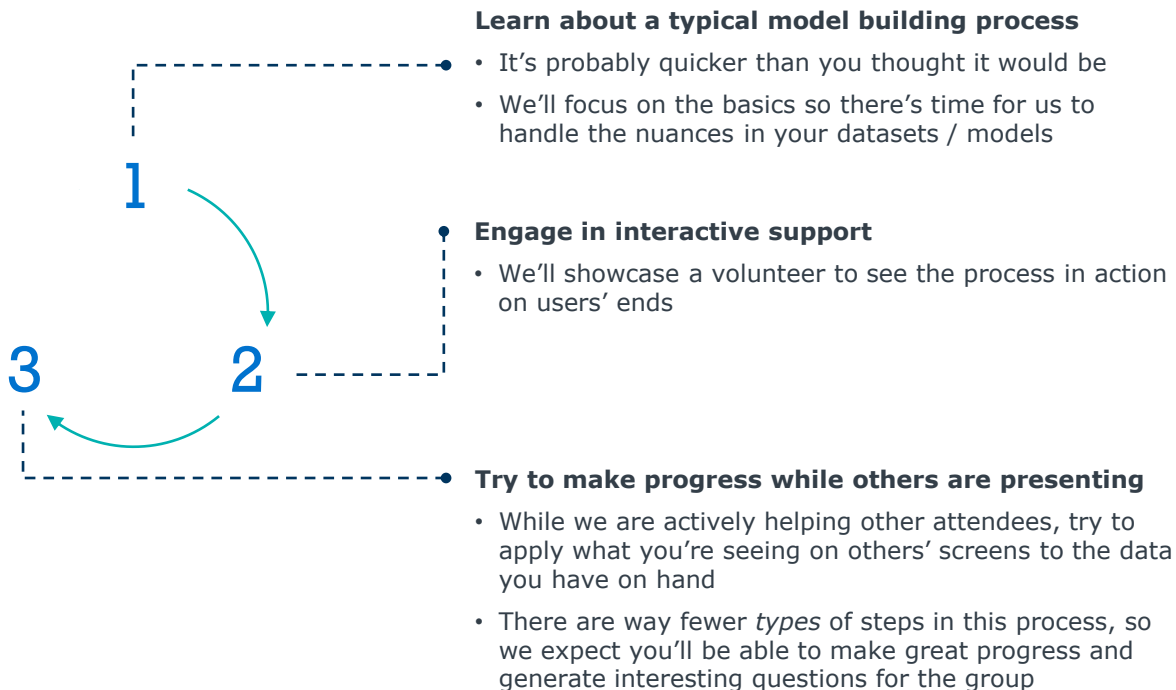
Two Individual Steps, but Effectively One Single Process



# Model Building (Next ~10 Minutes)



## Activity



# Share Your Experience!

Raise Your Hand or Enter Your Response in the Chat

**How did modeling go? What surprised you? What were your biggest takeaways?**



I thought I cleaned that field!!!



I can't believe [that thing] had a negative impact on retention...



That relationship turned out *exactly* how I expected it would.



There were way more related predictors than I expected.



I need to schedule some time to talk with my colleagues about this.

- 1 Welcome!
- 2 Modeling Process Overview
- 3 Activity: Scoring
- 4 Activity: Modeling Building
- 5 **Closing & Next Steps**



# What's Next?



## Contact Us

Contact us when you have questions or want to keep working on this!

[ri-support@eab.com](mailto:ri-support@eab.com)  
or [Monthly Office Hours](#)

**Anytime**

## Experience Poll

There's a poll in just a couple of slides.

Let us know how we did! We look forward to and appreciate the feedback.

**End of Today's Session**

## Check-In Email

We will reach out to check in and to provide next session's pre-work.

**~3 Weeks from Now**

## Session 3

We'll apply the new model we just built to your current class. We'll talk about strategies for intervention explore how effective your first model was!

**January 10<sup>th</sup>, 2023**



# We'll See You at Session 3 in January



26

Interactive and  
Actionable  
Working Sessions



## **Assembling Data and Building the First Model**

*July 12, 1:00-2:30 PM ET*

Prepare and build your model using the data collected in your pre-work.



## **Scoring Your Incoming Students and Building the Second Model**

*September 26, 1:00-2:00 PM ET*

Build a second model and discuss ways to use scores. Bring student success colleagues for the first half of this session.



## **Scoring Your Returning Students and Looking Forward**

*January 10, 1:00-2:00 PM ET*

Refine your model and explore additional student success outcomes to predict.

# Wrap Up and Polls



- 1 How was today's session?**
- 2 After today's session, how comfortable do you feel with translating a predictive model into student success scores?**
- 3 What was your biggest takeaway from today's session?**
- 4 Additional feedback and comments (e.g., session format, specifically the cohort style and breakout rooms)?**



202-747-1000 | [eab.com](http://eab.com)

