



Predicting Student GPA

A Rapid Insight Deep Dive

May 3, 2023

Rapid Insight

Meet Your Presenters



James Cousins

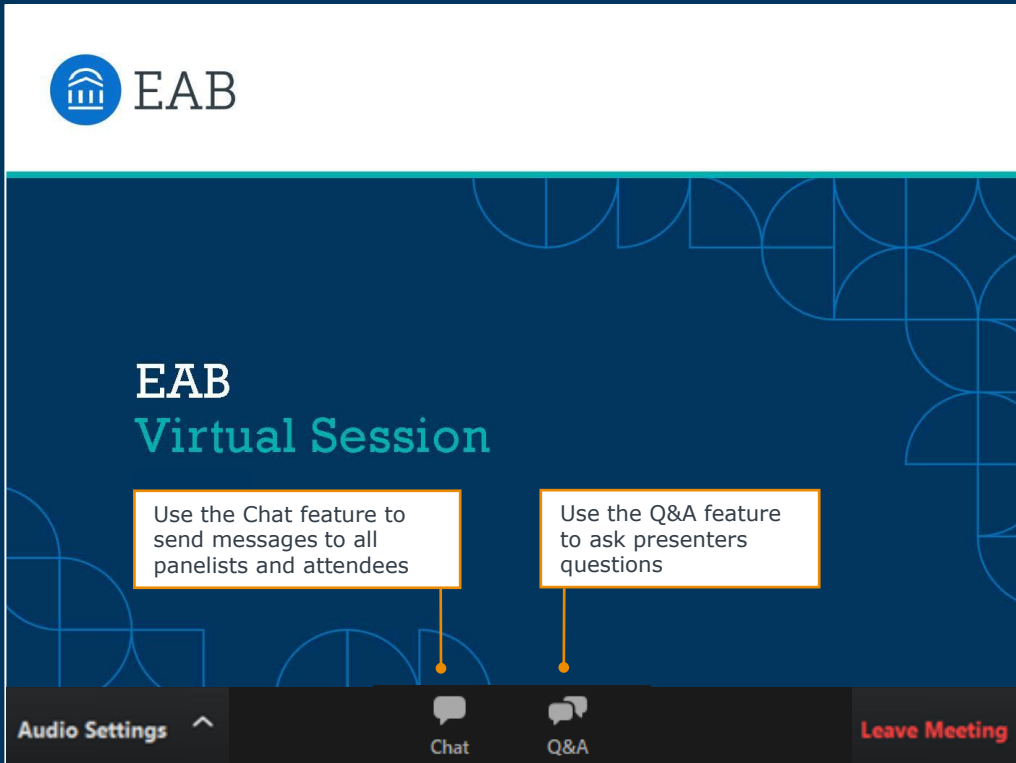
*Senior Strategic Leader,
Data and Analytics*



Lily Brennan

*Strategic Leader,
Data and Analytics*

Submit a Question or Comment



The screenshot displays the EAB Virtual Session interface. At the top left is the EAB logo, consisting of a blue circle with a white building icon and the text "EAB". Below the logo, the text "EAB Virtual Session" is displayed in white and teal. Two callout boxes with orange borders and lines pointing to the bottom navigation bar provide instructions: "Use the Chat feature to send messages to all panelists and attendees" and "Use the Q&A feature to ask presenters questions". The bottom navigation bar is dark grey and contains four items: "Audio Settings" with an upward arrow, "Chat" with a speech bubble icon, "Q&A" with a speech bubble icon, and "Leave Meeting" in red text.

EAB

EAB
Virtual Session

Use the Chat feature to send messages to all panelists and attendees

Use the Q&A feature to ask presenters questions

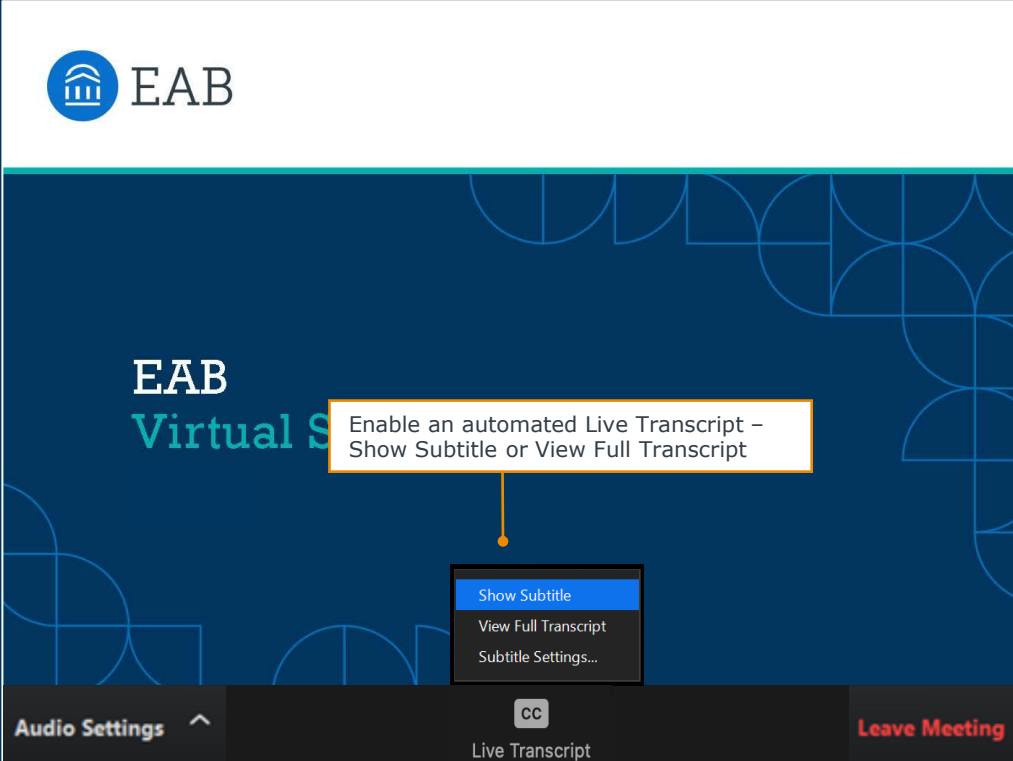
Audio Settings ^

Chat

Q&A

Leave Meeting

Turn on Captions



The image shows a Zoom meeting interface. At the top left, there is the EAB logo (a blue circle with a white building icon) and the text "EAB". The background is dark blue with a pattern of light blue geometric shapes. In the center, the text "EAB Virtual S" is visible. A white callout box with an orange border contains the text: "Enable an automated Live Transcript – Show Subtitle or View Full Transcript". Below this, a dark grey menu is open, showing three options: "Show Subtitle" (highlighted in blue), "View Full Transcript", and "Subtitle Settings...". At the bottom of the screen, there is a dark grey bar with three buttons: "Audio Settings" with an upward arrow, a "CC" icon above the text "Live Transcript", and "Leave Meeting" in red text.

EAB

EAB
Virtual S

Enable an automated Live Transcript –
Show Subtitle or View Full Transcript

- Show Subtitle
- View Full Transcript
- Subtitle Settings...

Audio Settings ^

CC
Live Transcript

Leave Meeting

Quick Poll

How comfortable are you with using Predict to create predictive models?

- A. Very comfortable
- B. Comfortable
- C. Somewhat comfortable
- D. Uncomfortable

Let's Chat!

For those of you using Predict comfortably, what outcomes are you targeting?

1 Tools Needed

2 Why Predict Student GPA

3 Framework for Analysis

4 Live Demonstration

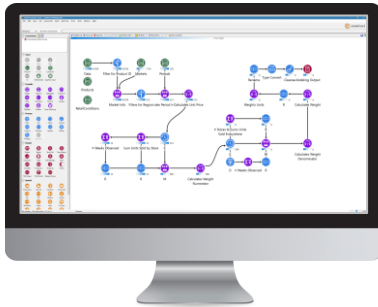
5 Audience Q & A

Rapid Insight Modules Used in Today's Discussion

8

Who Could Have "Predicted"?

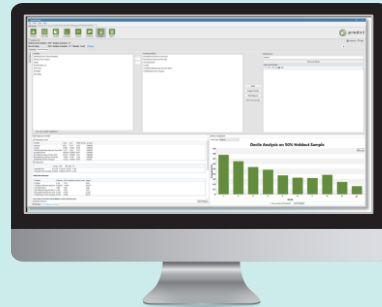
Construct



Optional, but helpful when gathering alternative indicators of student success:

- Term to Term
- Year to Year
- First Semester GPA
- Academic Probation

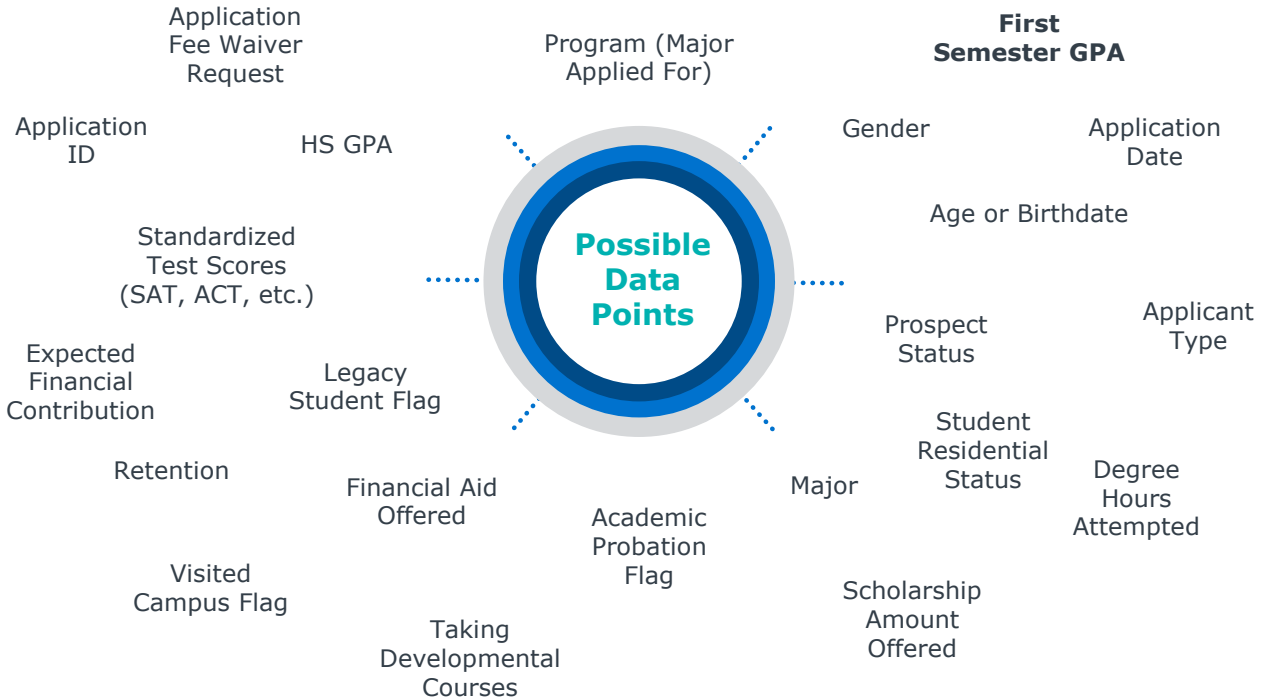
Predict



Necessary for the topics described in today's session.

- Facilitates statistical exploration and predictive model building

Data Fields to Consider Including in Your Model



*bolded value is necessary to create model

1

Tools Needed

2

Why Predict Student GPA

3

Framework for Analysis

4

Live Demonstration

5

Audience Q & A

GPA Modeling Provides Early Insights

Timing, Insight, and Possibilities



GPA Can Be Assessed *Early*

Traditional retention modeling flags an outcome approximately one year out. GPA modeling shortens that time frame to one semester.

An Alternate Look at a Critical Outcome



GPA modeling works best as a supplement to traditional modeling. Having an estimate for long term success *and* a short-term indicator empowers your student success team.



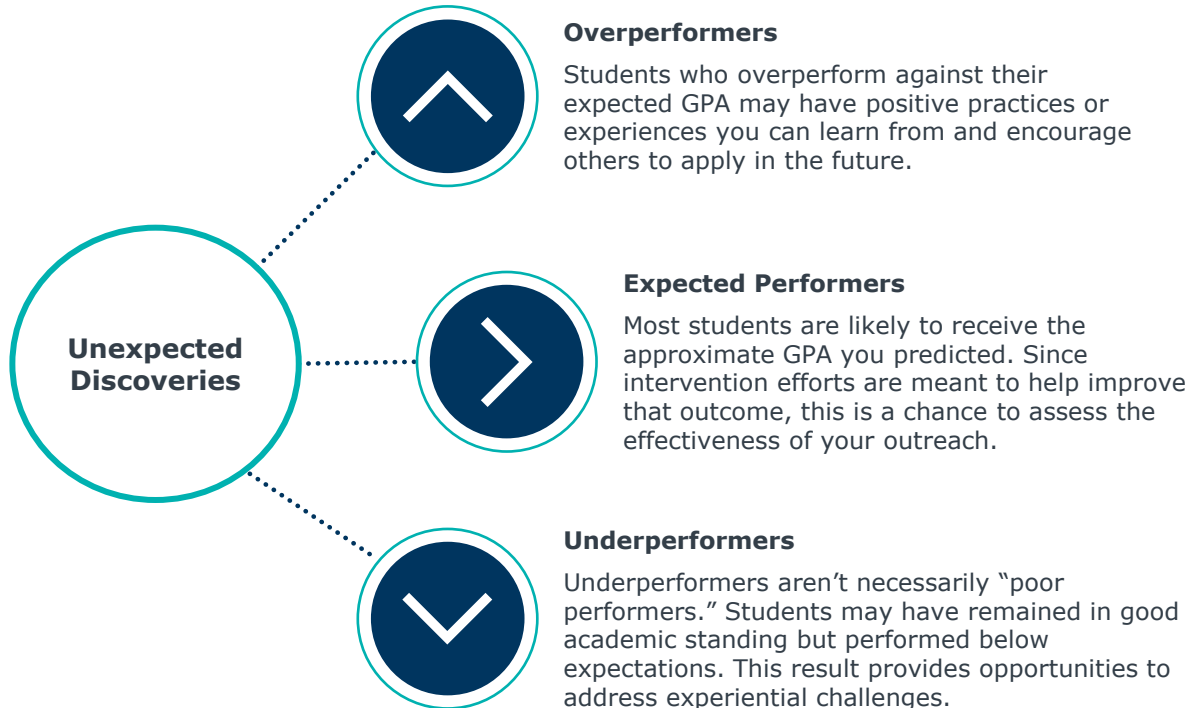
A Foundation for Further Analysis

A student's *actual* GPA can be compared against their expected GPA to show who *underperformed* or *overperformed* allowing you to analyze positive and negative student experiences.

Strategically Act on the Data



Opportunities to Better Support Students and Evaluate Intervention Efforts



1

Tools Needed

2

Why Predict Student GPA

3

Framework for Analysis

4

Live Demonstration

5

Audience Q & A

Process of Using a GPA Predictive Model

Steps to Build, Use, and Evaluate Your Model

**1**

Gather Data

- Identify sources and tables
- 3 years is a good rule of thumb
- Cast a wide net- you can narrow down later

**2**

Prep Data

- Merge/Append tables where needed
- Explore and account for data nuances
- Calculate new fields as possible predictors
- Calculate your outcome

**3**

Build Model

- Include interested stakeholders
- Explain or learn how variables impact outcome
- Test model

**4**

Score Students

- Apply model to incoming and/or returning students to create an expected GPA
- Review results to ensure accuracy

**5**

Reach Out

- Support students predicted to receive an unsatisfactory GPA
- Consider triaging your outreach so more intensive measures can occur without excessive cost

**6**

Assess

- Did the outreach seem to help?
- Was the model on target?

1

Tools Needed

2

Why Predict Student GPA

3

Framework for Analysis

4

Live Demonstration

5

Audience Q & A



Live Demonstration

- 1 Tools Needed
- 2 Why Predict Student GPA
- 3 Framework for Analysis
- 4 Live Demonstration
- 5 Audience Q & A

Submit a Question Using the Q&A Button



James Cousins
*Senior Strategic Leader,
Data and Analytics*



Lily Brennan
*Strategic Leader,
Data and Analytics*



Additional Questions?

Email RI-Support@eab.com with technical questions and RapidInsight@eab.com for all other inquiries.

Join Our Retention Modeling Cohort

Cohort Sessions

1

Assembling the Data and Building the First Model July 12 | 1:00-2:30PM ET

Begin with raw data and leave with a predictive model. Attendees will receive a heavily supported data preparation process and user-friendly walkthrough of predictive modeling.

Pre-work required

2

Scoring Your Incoming Students and Building the Second Model Sept. 26 | 1:00-2:00PM ET

Score incoming students and build another model. Attendees will receive some strategies for using the scores and collectively the cohort will brainstorm some more. Bring your colleagues from student success for the first half.

Pre-work required

3

Scoring Your Returning Students and Looking Forward January 10 | 1:00-2:00PM ET

Apply the model that you built using "first semester" data and refine your understanding of students' challenges. Explore the variety of alternate student success outcomes you can predict using similar methods in the future. Strategic leaders will establish individual check-ins with attendees.

Next Steps and Closing Polls



Next Steps

- ❑ Register for the upcoming Rapid Insight Retention Modeling Cohort. *(encourage your colleagues to attend, too!)*

Reach out to your Strategic Leader or rapidinsight@eab.com with any questions.

Polls

1. How was today's session?
 - a) Excellent
 - b) Good
 - c) Fair
 - d) Poor
2. How comfortable are you now with using Predict to create predictive models?
 - a) Very comfortable
 - b) Comfortable
 - c) Somewhat comfortable
 - d) Uncomfortable
3. Would you like to be registered for the Retention Modeling Cohort?
 - a) Yes
 - b) No

Ways to Reach Us



Monthly Office Hours

Thursday, May 18th
1:00-1:30 PM EST
[Register Online](#)



Email

RI-Support@eab.com



Help Center

Submit a request



202-747-1000 | eab.com

 @eab  @eab_  @WeAreEAB  @eab.life

